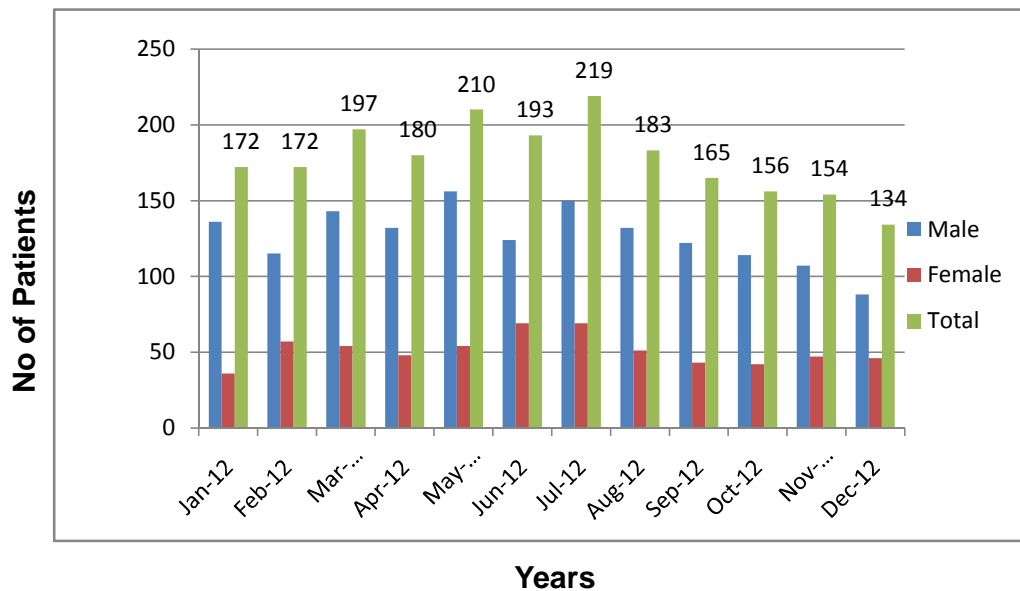


Karachi Institute of Heart Diseases
Summary of Angiography
Jan 2012 To Dec 2012

S.No	Month & Year	Male	Female	Total
1	Jan-12	136	36	172
2	Feb-12	115	57	172
3	Mar-12	143	54	197
4	Apr-12	132	48	180
5	May-12	156	54	210
6	Jun-12	124	69	193
7	Jul-12	150	69	219
8	Aug-12	132	51	183
9	Sep-12	122	43	165
10	Oct-12	114	42	156
11	Nov-12	107	47	154
12	Dec-12	88	46	134
Total		1519	616	2135

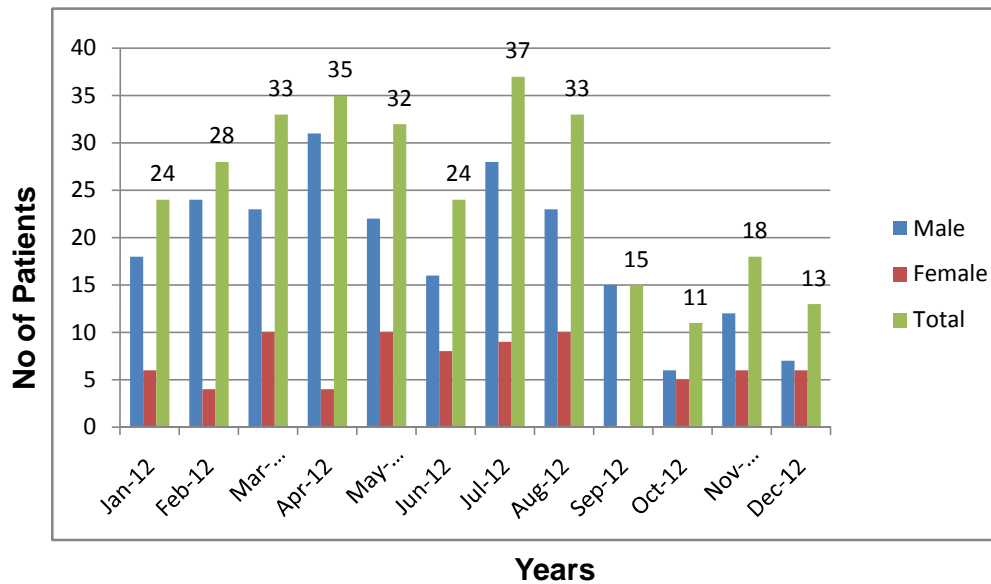
Summary Of Angiography
Jan 2012 - Dec 2012



Karachi Institute of Heart Diseases
Summary of Angioplasty
Jan 2012 To Dec 2012

S.No	Month & Year	Male	Female	Total
1	Jan-12	18	6	24
2	Feb-12	24	4	28
3	Mar-12	23	10	33
4	Apr-12	31	4	35
5	May-12	22	10	32
6	Jun-12	16	8	24
7	Jul-12	28	9	37
8	Aug-12	23	10	33
9	Sep-12	15	0	15
10	Oct-12	6	5	11
11	Nov-12	12	6	18
12	Dec-12	7	6	13
Total		225	78	303

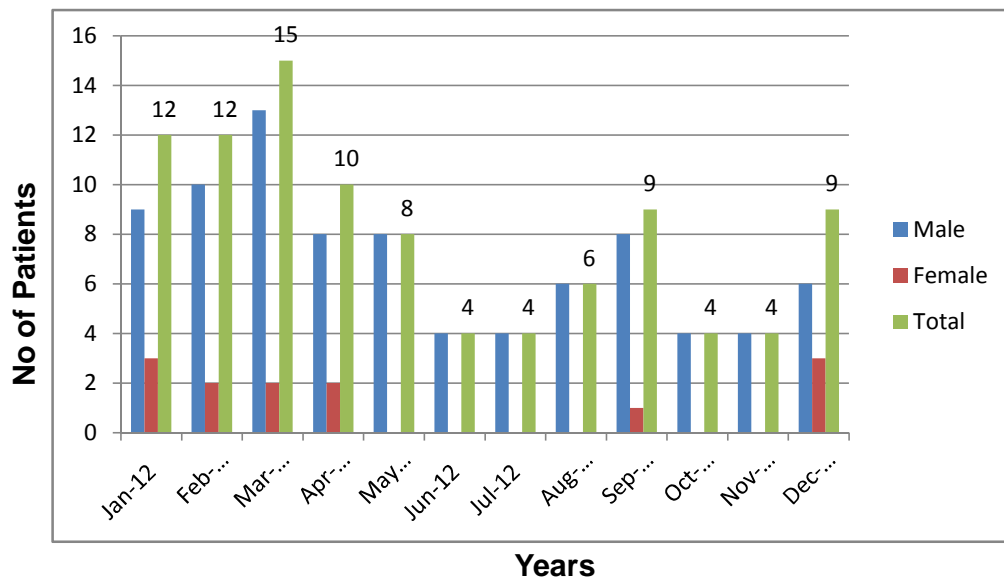
Summary Of Angioplasty
Jan 2012 - Dec 2012



Karachi Institute of Heart Diseases
Summary of Bypass
Jan 2012 To Dec 2012

S.No	Month & Year	Male	Female	Total
1	Jan-12	9	3	12
2	Feb-12	10	2	12
3	Mar-12	13	2	15
4	Apr-12	8	2	10
5	May-12	8	0	8
6	Jun-12	4	0	4
7	Jul-12	4	0	4
8	Aug-12	6	0	6
9	Sep-12	8	1	9
10	Oct-12	4	0	4
11	Nov-12	4	0	4
12	Dec-12	6	3	9
Total		84	13	97

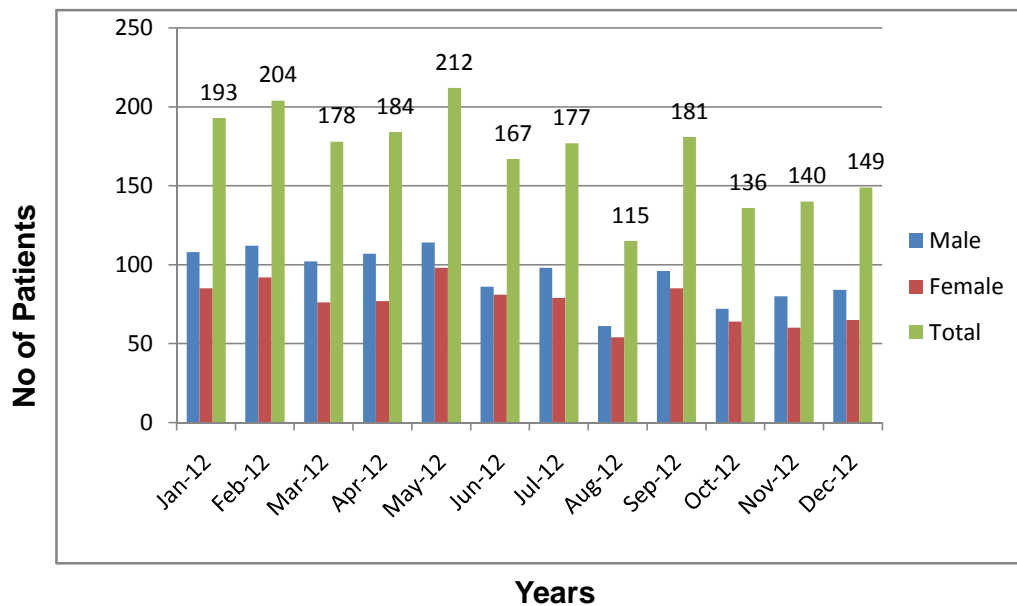
Summary Of Bypass
Jan 2012 - Dec 2012



Karachi Institute of Heart Diseases
Summary of Thallium
Jan 2012 To Dec 2012

S.No	Month & Year	Male	Female	Total
1	Jan-12	108	85	193
2	Feb-12	112	92	204
3	Mar-12	102	76	178
4	Apr-12	107	77	184
5	May-12	114	98	212
6	Jun-12	86	81	167
7	Jul-12	98	79	177
8	Aug-12	61	54	115
9	Sep-12	96	85	181
10	Oct-12	72	64	136
11	Nov-12	80	60	140
12	Dec-12	84	65	149
Total		1120	916	2036

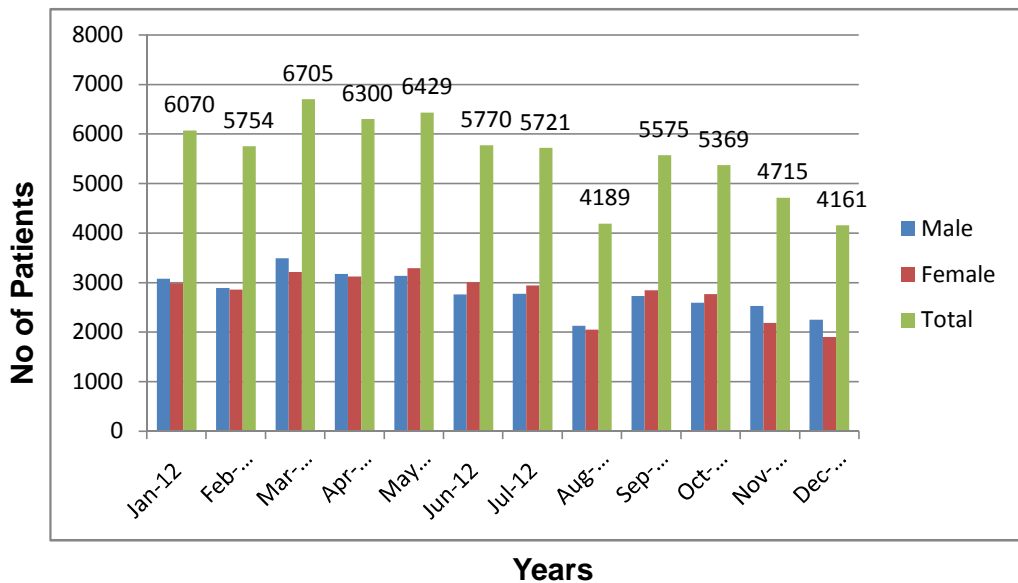
Summary Of Thallium
Jan 2012 - Dec 2012



Karachi Institute of Heart Diseases
Summary of OPD
Jan 2012 To Dec 2012

S.No	Month & Year	Male	Female	Total
1	Jan-12	3080	2990	6070
2	Feb-12	2891	2863	5754
3	Mar-12	3491	3214	6705
4	Apr-12	3178	3122	6300
5	May-12	3137	3292	6429
6	Jun-12	2763	3007	5770
7	Jul-12	2775	2946	5721
8	Aug-12	2133	2056	4189
9	Sep-12	2730	2845	5575
10	Oct-12	2597	2772	5369
11	Nov-12	2528	2187	4715
12	Dec-12	2255	1906	4161
Total		33558	33200	66758

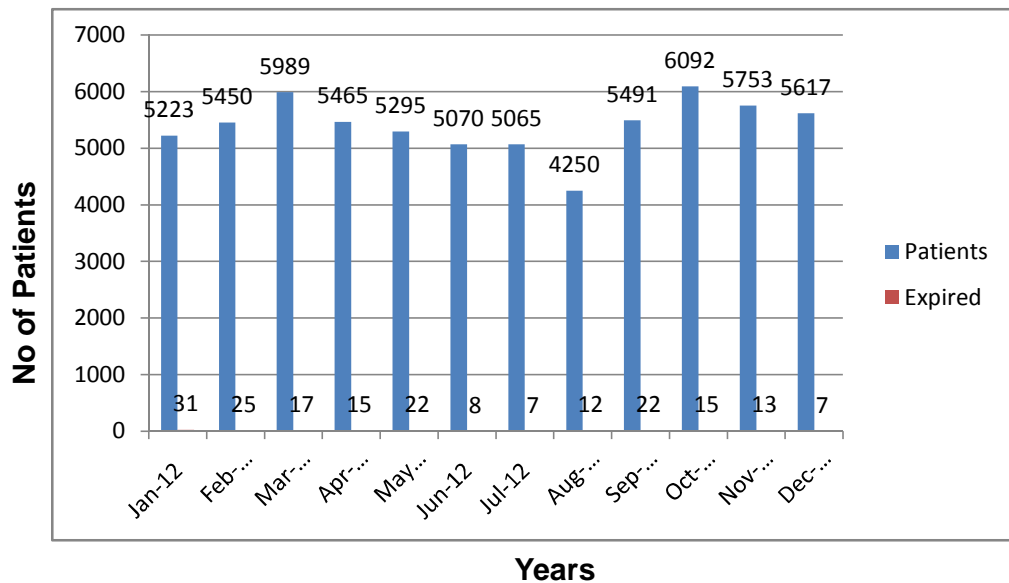
Summary Of O.P.D
Jan 2012 - Dec 2012



Karachi Institute of Heart Diseases
Summary of ER
Jan 2012 To Dec 2012

S.No	Month & Year	Patients	Expired	B.D	% of Exp
1	Jan-12	5223	31	76	0.593
2	Feb-12	5450	25	69	0.562
3	Mar-12	5989	17	58	0.283
4	Apr-12	5465	15	59	0.274
5	May-12	5295	22	48	0.415
6	Jun-12	5070	8	25	0.157
7	Jul-12	5065	7	48	0.138
8	Aug-12	4250	12	58	0.282
9	Sep-12	5491	22	39	0.4
10	Oct-12	6092	15	67	0.246
11	Nov-12	5753	13	51	0.225
12	Dec-12	5617	7	59	0.124
Total		64760	194	657	0.304

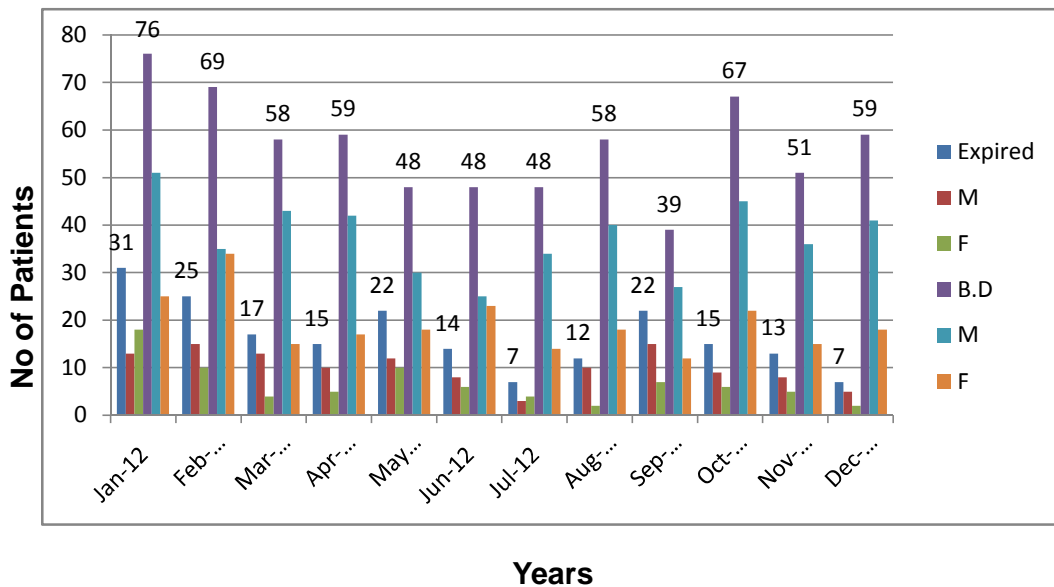
Summary Of E.R
Jan 2012 - Dec 2012



Karachi Institute of Heart Diseases
Summary of ER (Expire & BD)
Jan 2012 To Dec 2012

S.No	Month & Year	Expired	M	F	B.D	M	F
1	Jan-12	31	13	18	76	51	25
2	Feb-12	25	15	10	69	35	34
3	Mar-12	17	13	4	58	43	15
4	Apr-12	15	10	5	59	42	17
5	May-12	22	12	10	48	30	18
6	Jun-12	14	8	6	48	25	23
7	Jul-12	7	3	4	48	34	14
8	Aug-12	12	10	2	58	40	18
9	Sep-12	22	15	7	39	27	12
10	Oct-12	15	9	6	67	45	22
11	Nov-12	13	8	5	51	36	15
12	Dec-12	7	5	2	59	41	18
Total		200	121	79	680	449	231

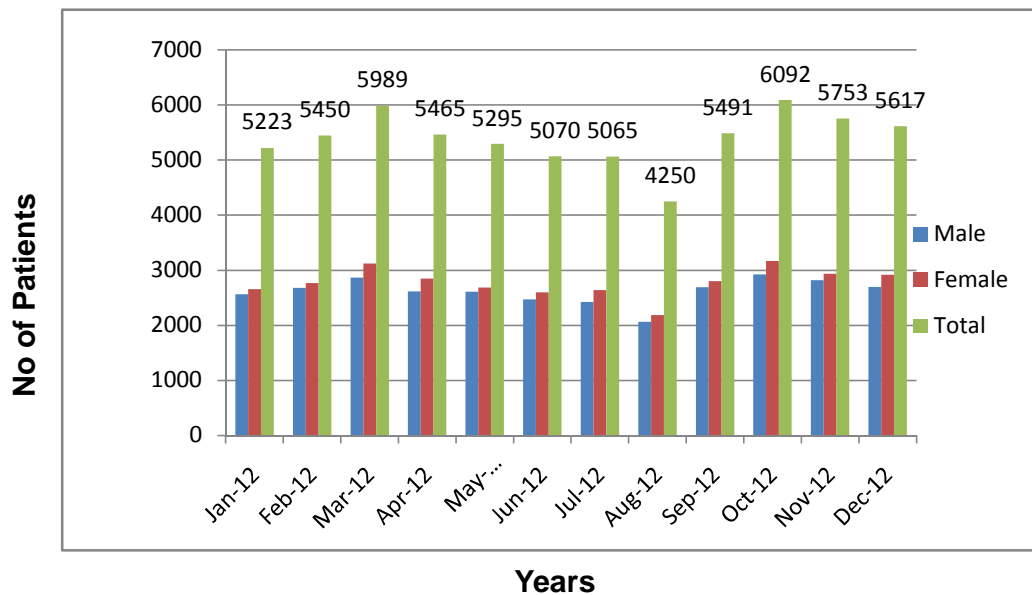
Summary Of E.R(Expire & BD)
Jan 2012 - Dec 2012



Karachi Institute of Heart Diseases
Summary of ER
Jan 2012 To Dec 2012

S.No	Month & Year	Male	Female	Total
1	Jan-12	2565	2658	5223
2	Feb-12	2680	2770	5450
3	Mar-12	2864	3125	5989
4	Apr-12	2615	2850	5465
5	May-12	2608	2687	5295
6	Jun-12	2470	2600	5070
7	Jul-12	2425	2640	5065
8	Aug-12	2065	2185	4250
9	Sep-12	2691	2800	5491
10	Oct-12	2924	3168	6092
11	Nov-12	2819	2934	5753
12	Dec-12	2696	2921	5617
Total		31422	33338	64760

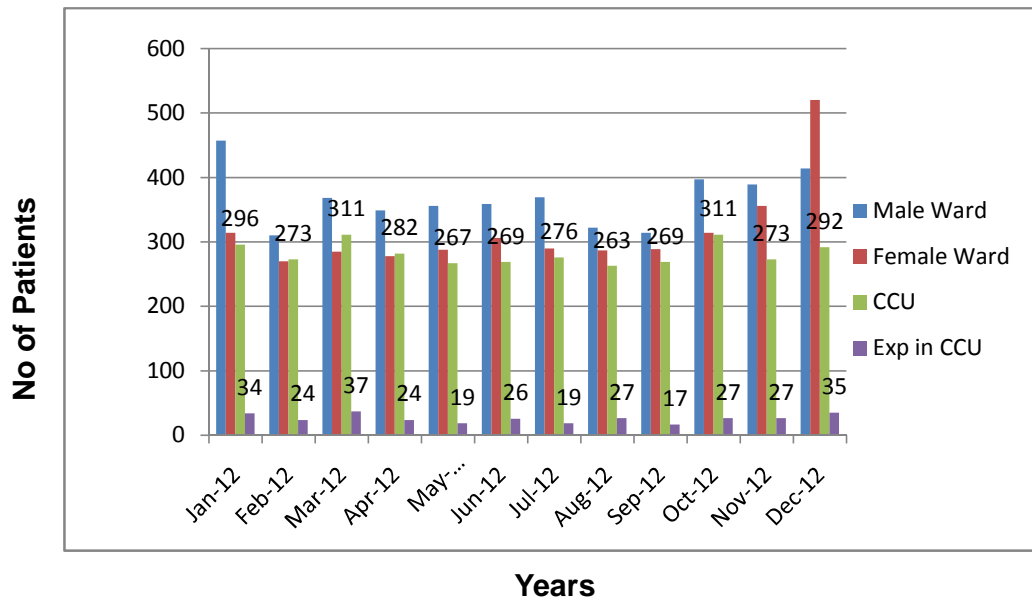
Summary Of E.R
Jan 2012 - Dec 2012



Karachi Institute of Heart Diseases
Summary of Admission
Jan 2012 To Dec 2012

S.No	Month & Year	Male Ward	Female Ward	CCU	Exp in CCU
1	Jan-12	457	314	296	34
2	Feb-12	310	270	273	24
3	Mar-12	368	285	311	37
4	Apr-12	349	278	282	24
5	May-12	356	288	267	19
6	Jun-12	359	306	269	26
7	Jul-12	369	290	276	19
8	Aug-12	322	287	263	27
9	Sep-12	314	289	269	17
10	Oct-12	397	314	311	27
11	Nov-12	389	356	273	27
12	Dec-12	414	520	292	35
Total		4404	3797	3382	316

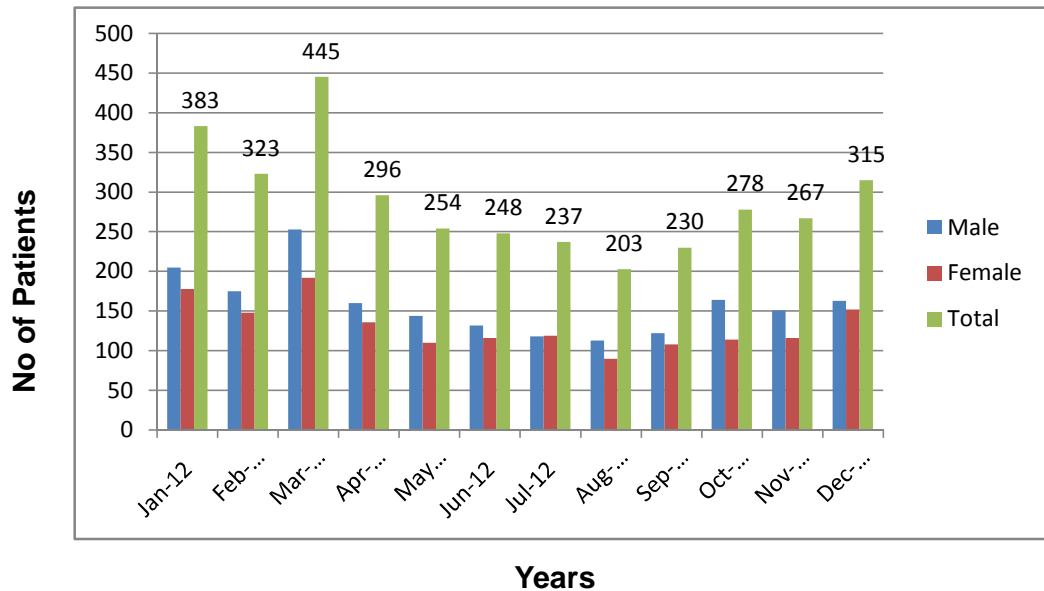
Summary Of Admission
Jan 2012 - Dec 2012



Karachi Institute of Heart Diseases
Summary of X-Ray
Jan 2012 To Dec 2012

S.No	Month & Year	Male	Female	Total
1	Jan-12	205	178	383
2	Feb-12	175	148	323
3	Mar-12	253	192	445
4	Apr-12	160	136	296
5	May-12	144	110	254
6	Jun-12	132	116	248
7	Jul-12	118	119	237
8	Aug-12	113	90	203
9	Sep-12	122	108	230
10	Oct-12	164	114	278
11	Nov-12	151	116	267
12	Dec-12	163	152	315
Total		1900	1579	3479

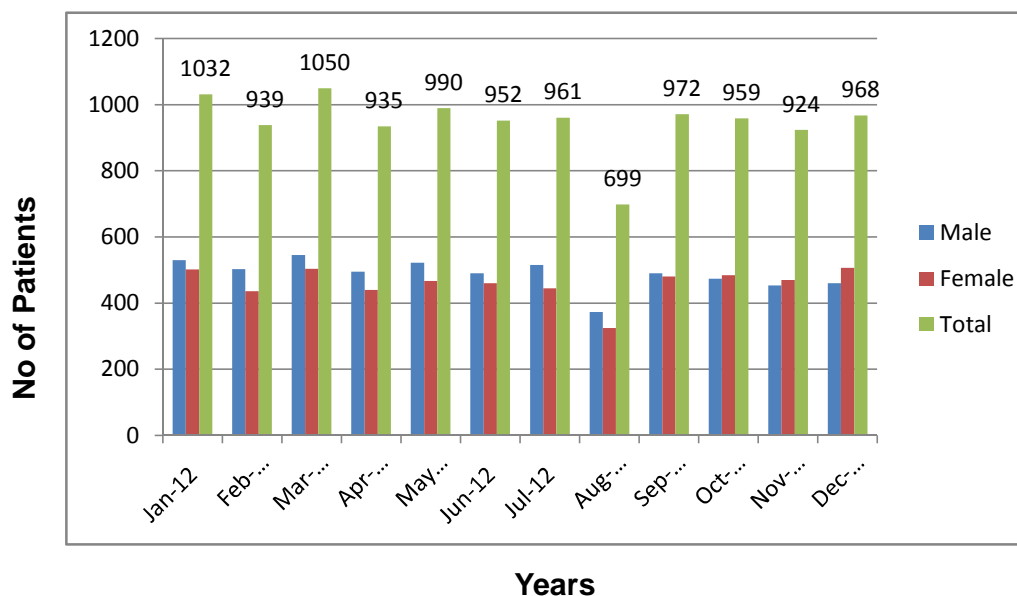
Summary Of X-Rays
Jan 2012 - Dec 2012



Karachi Institute of Heart Diseases
Summary of Echo
Jan 2012 To Dec 2012

S.No	Month & Year	Male	Female	Total
1	Jan-12	530	502	1032
2	Feb-12	503	436	939
3	Mar-12	546	504	1050
4	Apr-12	495	440	935
5	May-12	523	467	990
6	Jun-12	491	461	952
7	Jul-12	516	445	961
8	Aug-12	374	325	699
9	Sep-12	491	481	972
10	Oct-12	474	485	959
11	Nov-12	454	470	924
12	Dec-12	461	507	968
Total		5858	5523	11381

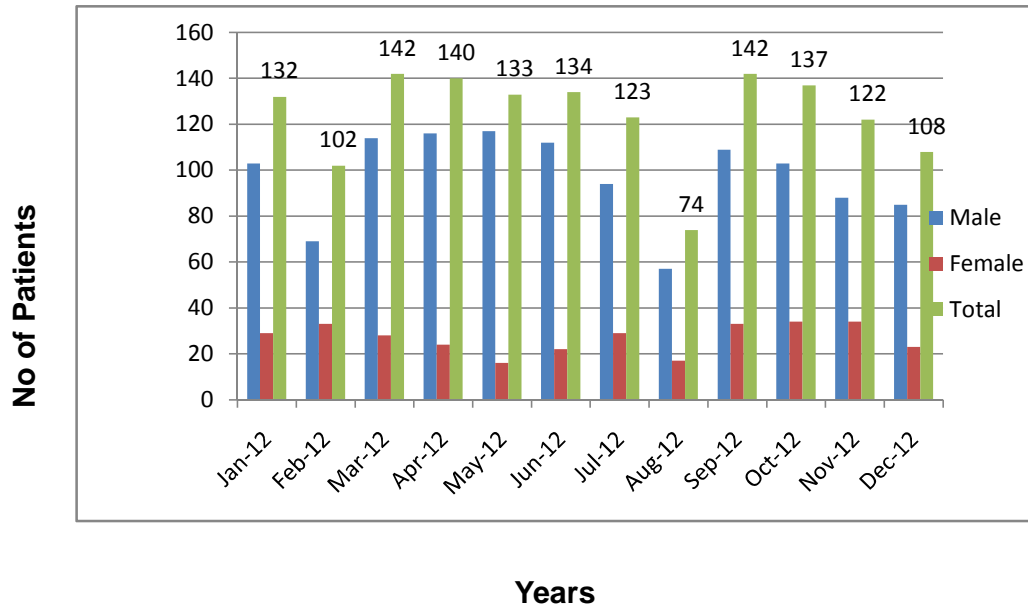
Summary Of ECHO
Jan 2012 - Dec 2012



Karachi Institute of Heart Diseases
Summary of ETT
Jan 2012 To Dec 2012

S.No	Month & Year	Male	Female	Total
1	Jan-12	103	29	132
2	Feb-12	69	33	102
3	Mar-12	114	28	142
4	Apr-12	116	24	140
5	May-12	117	16	133
6	Jun-12	112	22	134
7	Jul-12	94	29	123
8	Aug-12	57	17	74
9	Sep-12	109	33	142
10	Oct-12	103	34	137
11	Nov-12	88	34	122
12	Dec-12	85	23	108
Total		1167	322	1489

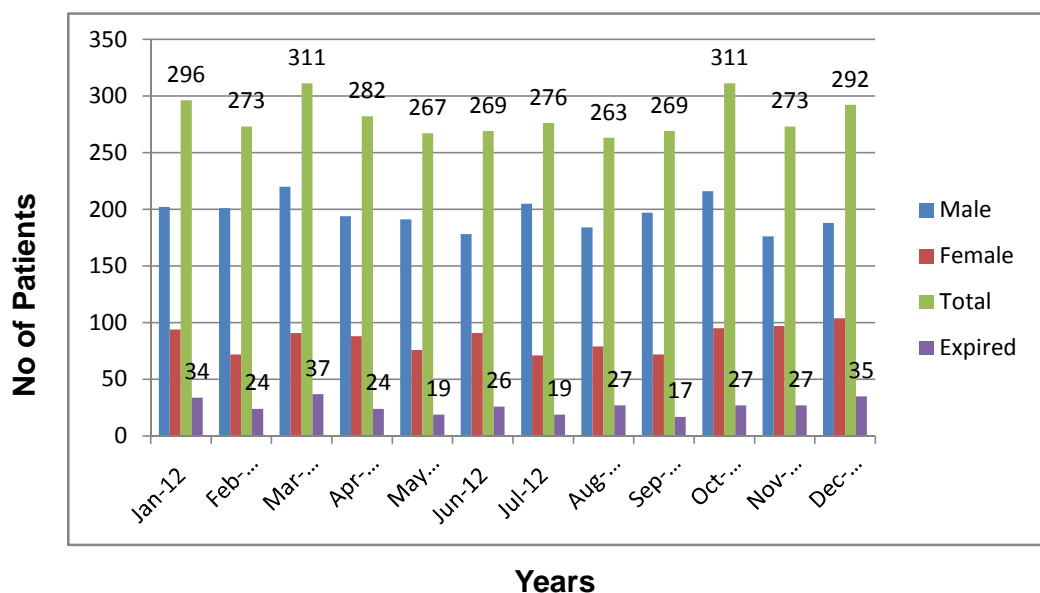
Summary Of ETT
Jan 2012 - Dec 2012



Karachi Institute of Heart Diseases
Summary of CCU
Jan 2012 To Dec 2012

S.No	Month & Year	Male	Female	Total	Expired	Male	Female
1	Jan-12	202	94	296	34	16	18
2	Feb-12	201	72	273	24	19	5
3	Mar-12	220	91	311	37	25	12
4	Apr-12	194	88	282	24	16	8
5	May-12	191	76	267	19	12	7
6	Jun-12	178	91	269	26	13	13
7	Jul-12	205	71	276	19	13	6
8	Aug-12	184	79	263	27	18	9
9	Sep-12	197	72	269	17	9	8
10	Oct-12	216	95	311	27	16	11
11	Nov-12	176	97	273	27	16	11
12	Dec-12	188	104	292	35	20	15
Total		2352	1030	3382	316	193	123

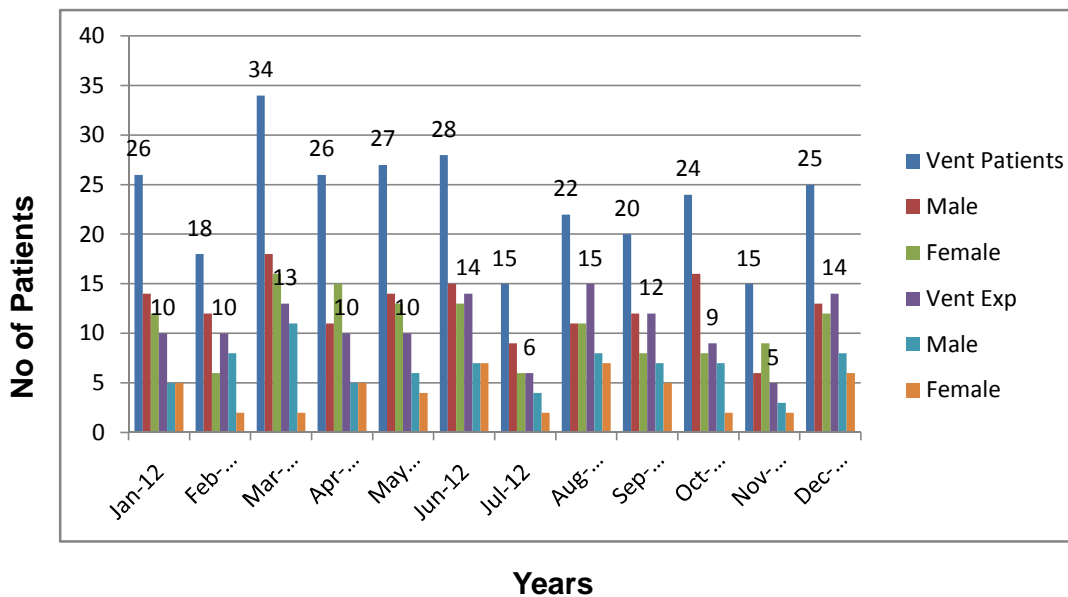
Summary Of CCU
Jan 2012 - Dec 2012



Karachi Institute of Heart Diseases
Summary of CCU
Jan 2012 To Dec 2012

S.No	Month & Year	Vent Patients	Male	Female	Vent Exp	Male	Female
1	Jan-12	26	14	12	10	5	5
2	Feb-12	18	12	6	10	8	2
3	Mar-12	34	18	16	13	11	2
4	Apr-12	26	11	15	10	5	5
5	May-12	27	14	13	10	6	4
6	Jun-12	28	15	13	14	7	7
7	Jul-12	15	9	6	6	4	2
8	Aug-12	22	11	11	15	8	7
9	Sep-12	20	12	8	12	7	5
10	Oct-12	24	16	8	9	7	2
11	Nov-12	15	6	9	5	3	2
12	Dec-12	25	13	12	14	8	6
Total		280	151	129	128	79	49

Summary Of CCU
Jan 2012 - Dec 2012



|

|

|

|

|

|

|

|
